

# Universitaire innovatiesystemen in Vlaanderen - Brussel

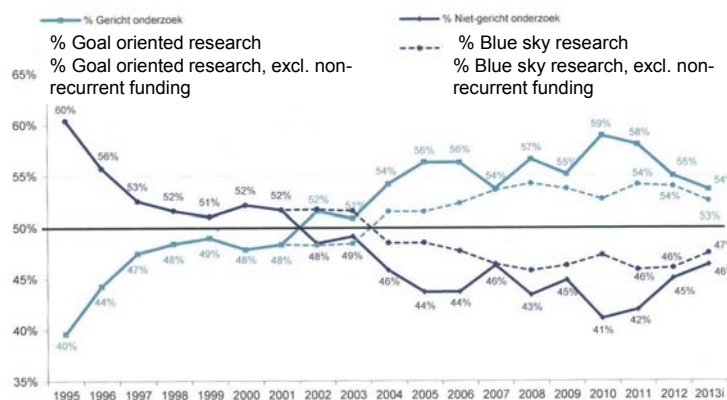


Jan Cornelis  
Vice rector International Policy



Vrije Universiteit Brussel

## 1. Government funding of blue sky and goal oriented research



**ECOOM - an interuniversity Center of Expertise on the Monitoring of Research and Development and a.o. design of KPI's - budget in 2014: 2,24 Meuro**

## 2. The changing university ecosystem ...

The new *normal* student :

*“Some will want to become entrepreneurs, all will have to be entrepreneurial”*

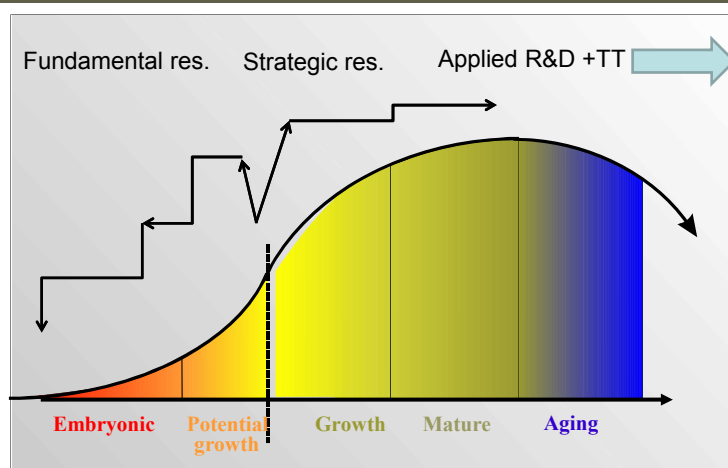
- Entrepreneurship and Entrepreneurial attitudes are core competencies that are expected from our graduates

An area for new initiatives

25-9-2013

3

## 3. Inductive versus deductive research paradigm



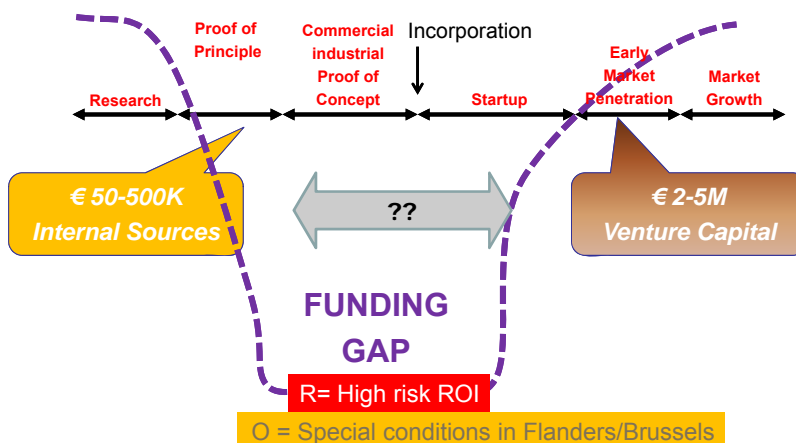
4

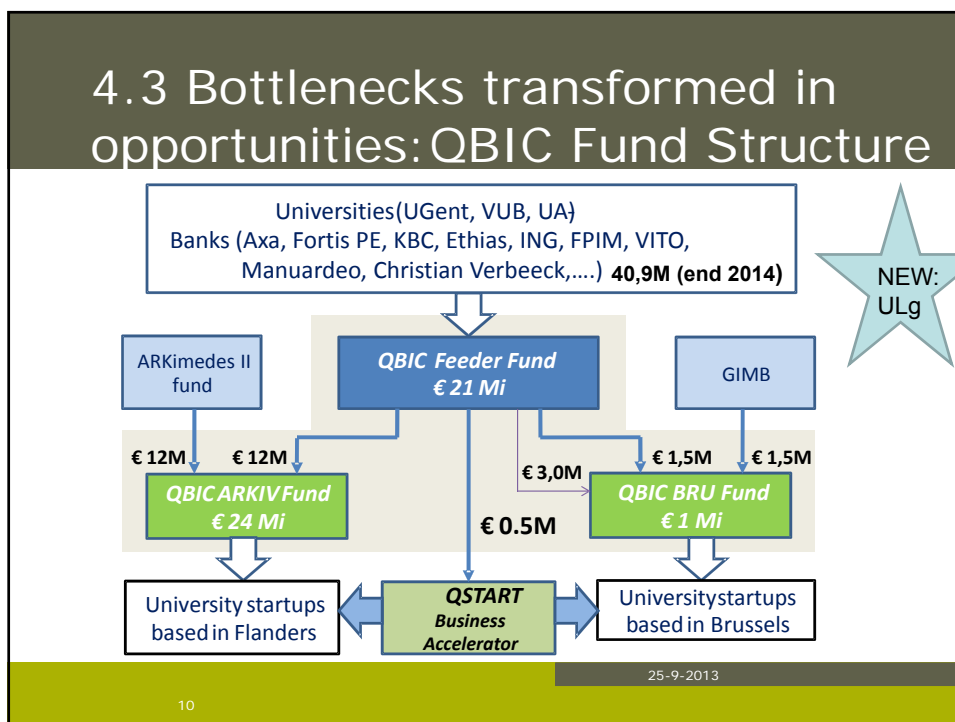
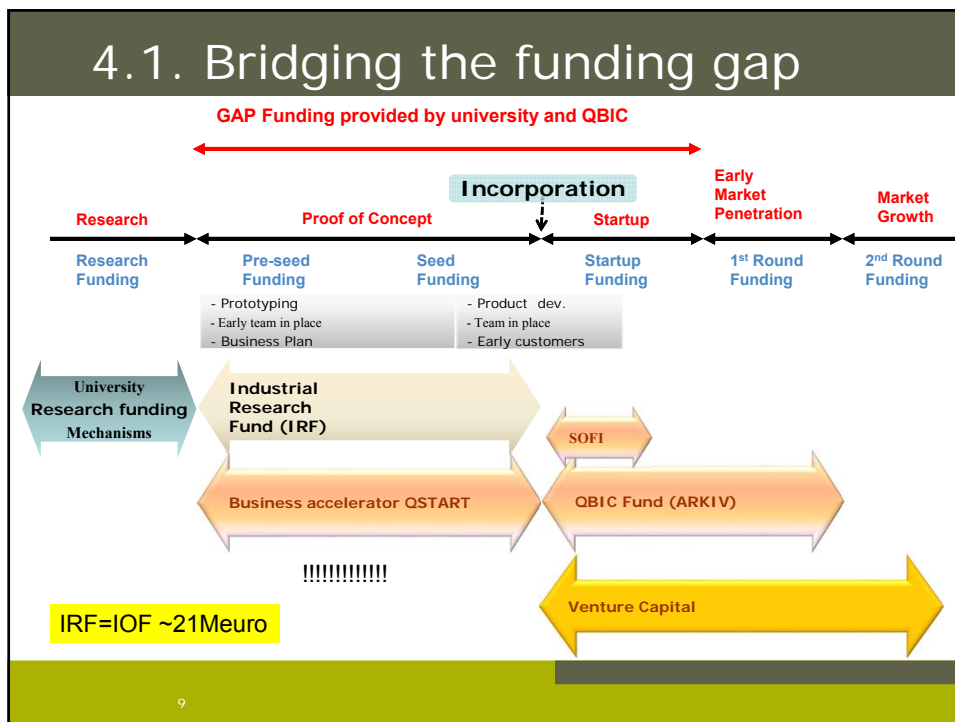
### 3.1 Government Support at all stages

	Fundamental research	Strategic research	Applied R&D and technology transfer
Subsidies and co-financing	FWO- science foundation BOF – university research Odysseus : foreign top researchers Methusalem: top researchers Pegasus: NEW foreign postdocs Hercules – instrumentation	IWT (SBO): science & technology IWT (Agriculture) IWT (Baekeland): mixed industry/university Phds <b>IRF (IOF): Ind. Res. fund @ university</b> IWT (TBM): Translational biomedical res. SOC's (IMEC, iMinds, VIB, VITO, SIM) Hercules Competence poles	IWT (O&O): R&D industry IWT: VIN – Flemish Innovation network TETRA fund: industrial projects IWT (VIS) - innovation stimulation & collective research Innovation centers <b>University TTI funding</b> International collaboration <b>Competence poles</b> Living Labs
Funds		<b>SOFI/INNOVIRIS: pre-incubation (SOC/univ.)</b>	<b>SOFI</b> <b>ARKIV &amp; Qbic,...</b> TINA (open innovation platforms)

Warning: The governance landscape is in full restructuring

### 4. Spin off creation ... the valley of death, risks and opportunities?





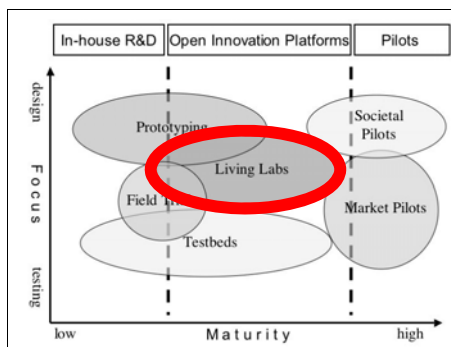
## 5. Living Lab as Innovation Platforms

### ➤ Living Lab

- Local
- Experimental
- Safe
- Critical mass

### ➤ Living Lab as Innovation Platform

- Not solely technical
- Not solely the individual user
- Also communities and society
- Also non-ICT companies, SMEs and public organisations
- Also Policy Makers



Care Living labs (e.g. senior citizens)  
Living labs on Electric Vehicles  
iLab.o in iMinds

Ballon et al., 2005

11



Vrije Universiteit Brussel

## 6. Take up of university technology by industry

- O&O funding channel of IWT: ~150 Meuro
- Bilateral contracts

General assumptions: “The bottlenecks are attributed to a knowledge gap, a culture gap, financial obstacles or conflicts of interest related to IP, a difficult match between offer and demand.

BUT: what about the limited size of markets and government innovative tenders?

3/3/2015

12

## 7. Infrastructure

- “Hercules stichting” unique infrastructure funding- including data bases
- European level: ESFRI – an entrance ticket for Belgian researchers! representation
- A positive example VLIZ

3/3/2015

13

## 8. Talent attraction and retention

- Top researchers: Odysseus, but how to retain them after the money is spent (Flanders is a competitive environment).
- Tenure track system is being generalized – research career

3/3/2015

14

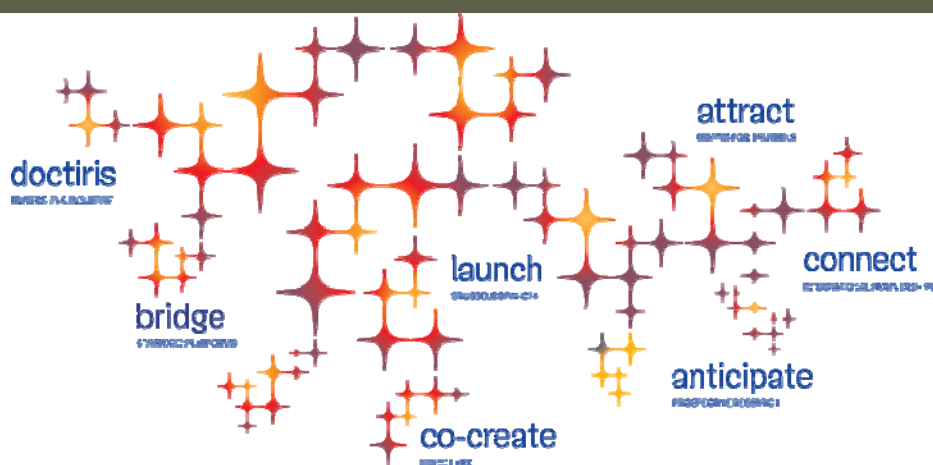
## 9. Tech transfer in international context

- Support for International Joint R&D Structures (a funding gap to be filled-in?) → International TT and spin offs born international.

3/3/2015

15

## 10. The Brussels INNOVIRIS Biotope



3/3/2015

16

## 11. Symbiosis between Community, Regional and Federal research

- **Federal research council** should be more visible
- **IUAP networks** – transgressing regions and communities.
- Representation on the **international scenery** (e.g. large infrastructure governance)
- Maintaining research on top of innovation and services, delivered by **federal research institutes**
- Unique **national infrastructures**: e.g. Belgica
- **Fiscal support for research** (effective, although not contributing directly to the 3% norm)